

Prensa-Cabo Ex tipo A2F - TPCX02



Características:

Prensa cabo metálico para cabo não armado de seção circular. Podem ser fornecidos nos seguintes materiais: **aço inoxidável (304, 316 ou 316L), alumínio, latão ou latão niquelado.** Fornecidos com rosca tipo **NPT, BSP ou métrica**, nos tamanhos de **1/2" a 3" ou Métrica M16 a M75.**

Aplicação:

Indicado para entrada de cabos elétricos em invólucros à prova de explosão (Ex d), segurança aumentada (Ex e) ou poeira combustível (Ex t).

Marcação:

Proteção: Ex d IIC Gb Proteção: Ex d (à prova de explosão) | Ex e (segurança aumentada) | Ex ta (proteção para poeira combustível)

Gases: Zonas 1 e 2, Grupos IIA / IIB / IIC, Gb

Poeiras combustíveis: Zonas 21 e 22, Grupos IIIA / IIIB / IIIC, Da

Grau de proteção: IP66 / IP67 / IP66W ou IP67W

Normas:

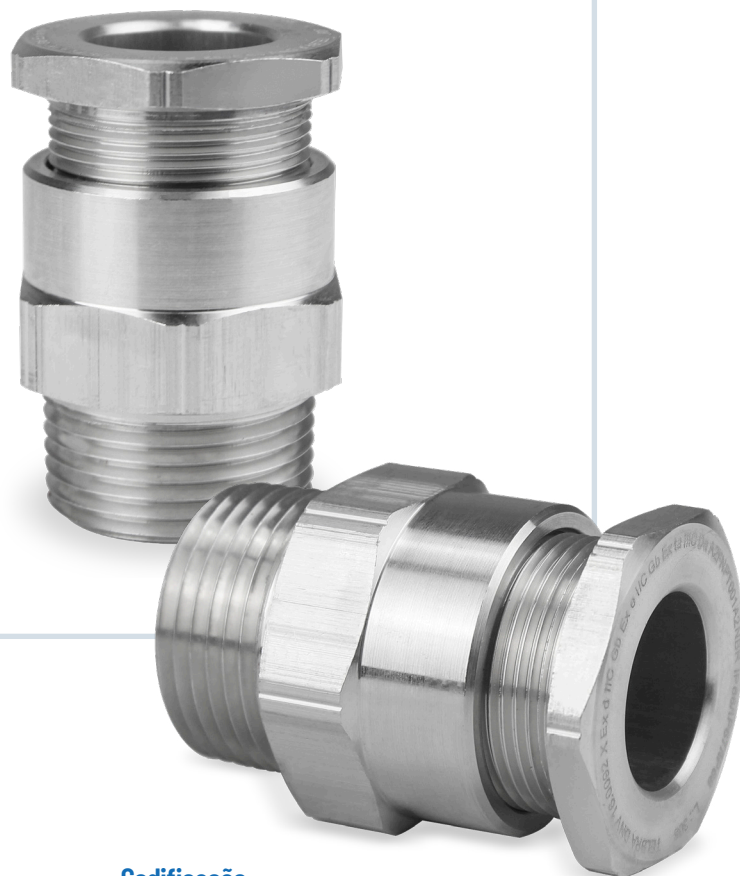
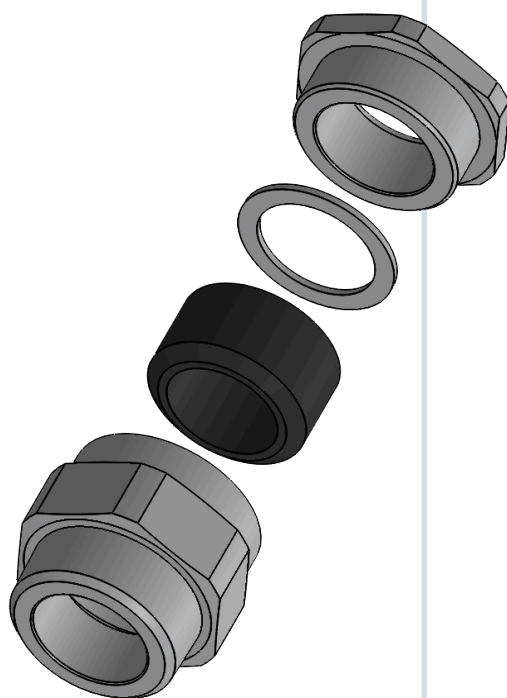
ABNT NBR IEC 60079-0

ABNT NBR IEC 60079-1

ABNT NBR IEC 60079-7

ABNT NBR IEC 60079-31

ABNT NBR IEC 60529



Codificação:

TPCX02/x-ayRRb

x = Tipo de material

A = Alumínio

L = Latão

LN = Latão niquelado

I = Inox 134 (304), 136 (316), 136L (316L)

a = 1=1/2", 2=3/4", 3=1", 4=1.1/4", 5= 1.1/2", 6=2", 7=2.1/2", 8=3
M16, M20, M25, M32, M40, M50, M63, M75

Y = Tipo de rosca

N = NPT

B = BSP

M = MÉTRICA

RR = 1, 2, 3, 4, 5 e 6

B = Tipo de vedação

NBR = Nitrílica, **NEO =** Neoprene,

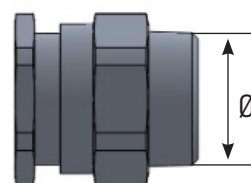
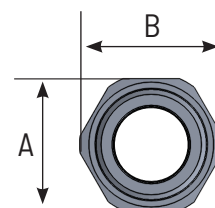
SIL = Silicone, **VIT =** Viton

Prensa-Cabo Ex tipo A2F - TPCX02



TABELA I - NPT DIMENSIONAL (mm)

| CÓDIGO | | | | Tam. Anel | Mat. Anel | Externas | | Diâm. Externo do Cabo | |
|----------|---|-------|-----|-----------|-----------|----------|-----|-----------------------|------|
| | | | | | | C | D | Min. | Max. |
| TPCX02/x | - | 1/2 | NPT | 1 | NBR | 25 | 32 | 3,5 | 5 |
| TPCX02/x | - | 1/2 | NPT | 2 | NBR | 25 | 32 | 5 | 9 |
| TPCX02/x | - | 1/2 | NPT | 3 | NBR | 25 | 32 | 8 | 11,5 |
| TPCX02/x | - | 1/2 | NPT | 4 | NBR | 25 | 32 | 11 | 13,5 |
| TPCX02/x | - | 1/2 | NPT | 5 | NBR | 25 | 32 | 13 | 15 |
| TPCX02/x | - | 3/4 | NPT | 1 | NBR | 32 | 35 | 3,5 | 5 |
| TPCX02/x | - | 3/4 | NPT | 2 | NBR | 32 | 35 | 5 | 9 |
| TPCX02/x | - | 3/4 | NPT | 3 | NBR | 32 | 35 | 8 | 11,5 |
| TPCX02/x | - | 3/4 | NPT | 4 | NBR | 32 | 35 | 11 | 13,5 |
| TPCX02/x | - | 3/4 | NPT | 5 | NBR | 32 | 35 | 13 | 15 |
| TPCX02/x | - | 3/4 | NPT | 6 | NBR | 32 | 35 | 15 | 19,5 |
| TPCX02/x | - | 1 | NPT | 1 | NBR | 38 | 41 | 11 | 13,5 |
| TPCX02/x | - | 1 | NPT | 2 | NBR | 38 | 41 | 13 | 15 |
| TPCX02/x | - | 1 | NPT | 3 | NBR | 38 | 41 | 15 | 19,5 |
| TPCX02/x | - | 1 | NPT | 4 | NBR | 38 | 41 | 19 | 22 |
| TPCX02/x | - | 1 | NPT | 5 | NBR | 38 | 41 | 22 | 25,5 |
| TPCX02/x | - | 1.1/4 | NPT | 1 | NBR | 44,5 | 47 | 19 | 22 |
| TPCX02/x | - | 1.1/4 | NPT | 2 | NBR | 44,5 | 47 | 22 | 25,5 |
| TPCX02/x | - | 1.1/4 | NPT | 3 | NBR | 44,5 | 47 | 25 | 28 |
| TPCX02/x | - | 1.1/4 | NPT | 4 | NBR | 44,5 | 47 | 28 | 32 |
| TPCX02/x | - | 1.1/2 | NPT | 1 | NBR | 57 | 60 | 25 | 28 |
| TPCX02/x | - | 1.1/2 | NPT | 2 | NBR | 57 | 60 | 28 | 32 |
| TPCX02/x | - | 1.1/2 | NPT | 3 | NBR | 57 | 60 | 31 | 37 |
| TPCX02/x | - | 2 | NPT | 1 | NBR | 65 | 68 | 31 | 37 |
| TPCX02/x | - | 2 | NPT | 2 | NBR | 65 | 68 | 36,5 | 43 |
| TPCX02/x | - | 2.1/2 | NPT | 1 | NBR | 82 | 86 | 42,5 | 50 |
| TPCX02/x | - | 2.1/2 | NPT | 2 | NBR | 82 | 86 | 49,5 | 55 |
| TPCX02/x | - | 3 | NPT | 1 | NBR | 100 | 105 | 54,5 | 61 |
| TPCX02/x | - | 3 | NPT | 2 | NBR | 100 | 105 | 60,5 | 67 |

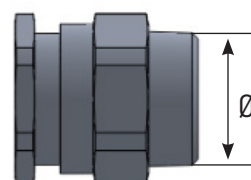
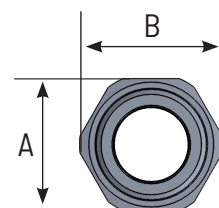


Prensa-Cabo Ex tipo A2F - TPCX02



TABELA II - BSP DIMENSIONAL (mm)

| CÓDIGO | Tam. Anel | Mat. Anel | Externas | | Diâm. Externo do Cabo | | | | |
|----------|-----------|-----------|----------|---|-----------------------|------|-----|------|------|
| | | | A | B | Min. | Max. | | | |
| TPCX02/x | - | 1/2 | BSP | 1 | NBR | 25 | 32 | 3,5 | 5 |
| TPCX02/x | - | 1/2 | BSP | 2 | NBR | 25 | 32 | 5 | 9 |
| TPCX02/x | - | 1/2 | BSP | 3 | NBR | 25 | 32 | 8 | 11,5 |
| TPCX02/x | - | 1/2 | BSP | 4 | NBR | 25 | 32 | 11 | 13,5 |
| TPCX02/x | - | 1/2 | BSP | 5 | NBR | 25 | 32 | 13 | 15 |
| TPCX02/x | - | 3/4 | BSP | 1 | NBR | 32 | 35 | 3,5 | 5 |
| TPCX02/x | - | 3/4 | BSP | 2 | NBR | 32 | 35 | 5 | 9 |
| TPCX02/x | - | 3/4 | BSP | 3 | NBR | 32 | 35 | 8 | 11,5 |
| TPCX02/x | - | 3/4 | BSP | 4 | NBR | 32 | 35 | 11 | 13,5 |
| TPCX02/x | - | 3/4 | BSP | 5 | NBR | 32 | 35 | 13 | 15 |
| TPCX02/x | - | 3/4 | BSP | 6 | NBR | 32 | 35 | 15 | 19,5 |
| TPCX02/x | - | 1 | BSP | 1 | NBR | 38 | 41 | 11 | 13,5 |
| TPCX02/x | - | 1 | BSP | 2 | NBR | 38 | 41 | 13 | 15 |
| TPCX02/x | - | 1 | BSP | 3 | NBR | 38 | 41 | 15 | 19,5 |
| TPCX02/x | - | 1 | BSP | 4 | NBR | 38 | 41 | 19 | 22 |
| TPCX02/x | - | 1 | BSP | 5 | NBR | 38 | 41 | 22 | 25,5 |
| TPCX02/x | - | 1.1/4 | BSP | 1 | NBR | 44,5 | 47 | 19 | 22 |
| TPCX02/x | - | 1.1/4 | BSP | 2 | NBR | 44,5 | 47 | 22 | 25,5 |
| TPCX02/x | - | 1.1/4 | BSP | 3 | NBR | 44,5 | 47 | 25 | 28 |
| TPCX02/x | - | 1.1/4 | BSP | 4 | NBR | 44,5 | 47 | 28 | 32 |
| TPCX02/x | - | 1.1/2 | BSP | 1 | NBR | 57 | 60 | 25 | 28 |
| TPCX02/x | - | 1.1/2 | BSP | 2 | NBR | 57 | 60 | 28 | 32 |
| TPCX02/x | - | 1.1/2 | BSP | 3 | NBR | 57 | 60 | 31 | 37 |
| TPCX02/x | - | 2 | BSP | 1 | NBR | 65 | 68 | 31 | 37 |
| TPCX02/x | - | 2 | BSP | 2 | NBR | 65 | 68 | 36,5 | 43 |
| TPCX02/x | - | 2.1/2 | BSP | 1 | NBR | 82 | 86 | 42,5 | 50 |
| TPCX02/x | - | 2.1/2 | BSP | 2 | NBR | 82 | 86 | 49,5 | 55 |
| TPCX02/x | - | 3 | BSP | 1 | NBR | 100 | 105 | 54,5 | 61 |
| TPCX02/x | - | 3 | BSP | 2 | NBR | 100 | 105 | 60,5 | 67 |



Prensa-Cabo Ex tipo A2F - TPCX02



TABELA III - MÉTRICA DIMENSIONAL (mm)

| CÓDIGO | Tam. Anel | Mat. Anel | Externas | | Diâm. Externo do Cabo | | | | |
|----------|-----------|-----------|----------|---|-----------------------|------|-----|------|------|
| | | | A | B | Min. | Max. | | | |
| TPCX02/x | - | 16 | M | 1 | NBR | 25 | 32 | 3,5 | 5 |
| TPCX02/x | - | 16 | M | 2 | NBR | 25 | 32 | 5 | 9 |
| TPCX02/x | - | 16 | M | 3 | NBR | 25 | 32 | 8 | 11,5 |
| TPCX02/x | - | 20 | M | 1 | NBR | 25 | 32 | 3,5 | 5 |
| TPCX02/x | - | 20 | M | 2 | NBR | 25 | 32 | 5 | 9 |
| TPCX02/x | - | 20 | M | 3 | NBR | 25 | 32 | 8 | 11,5 |
| TPCX02/x | - | 20 | M | 4 | NBR | 25 | 32 | 11 | 13,5 |
| TPCX02/x | - | 20 | M | 5 | NBR | 32 | 35 | 13 | 15 |
| TPCX02/x | - | 25 | M | 1 | NBR | 32 | 35 | 8 | 11,5 |
| TPCX02/x | - | 25 | M | 2 | NBR | 32 | 35 | 11 | 13,5 |
| TPCX02/x | - | 25 | M | 3 | NBR | 32 | 35 | 13 | 15 |
| TPCX02/x | - | 25 | M | 4 | NBR | 38 | 41 | 15 | 19,5 |
| TPCX02/x | - | 32 | M | 1 | NBR | 38 | 41 | 15 | 19,5 |
| TPCX02/x | - | 32 | M | 2 | NBR | 44,5 | 47 | 19 | 22 |
| TPCX02/x | - | 32 | M | 3 | NBR | 44,5 | 47 | 22 | 25,5 |
| TPCX02/x | - | 40 | M | 1 | NBR | 57 | 60 | 25 | 28 |
| TPCX02/x | - | 40 | M | 2 | NBR | 57 | 60 | 28 | 32 |
| TPCX02/x | - | 50 | M | 1 | NBR | 65 | 68 | 31 | 37 |
| TPCX02/x | - | 50 | M | 2 | NBR | 65 | 68 | 36,5 | 43 |
| TPCX02/x | - | 63 | M | 1 | NBR | 82 | 86 | 42,5 | 50 |
| TPCX02/x | - | 63 | M | 2 | NBR | 82 | 86 | 49,5 | 55 |
| TPCX02/x | - | 75 | M | 1 | NBR | 100 | 105 | 54,5 | 61 |
| TPCX02/x | - | 75 | M | 2 | NBR | 100 | 105 | 60,5 | 67 |

